



Welcome to the Faculty of Biosciences

Get around the faculty and campus



Facultat
Biosciències
UAB

UAB
Universitat Autònoma
de Barcelona

CONTENTS

MEET THE FACULTY

- Access and maps 3
- The Dean's team 3
- The Departments 3
- contact 3
- Degree coordination and exchange students 4

← EXCHANGE STUDENTS

ACADEMIC QUESTIONS

- Academic management 4
- Academic information 4
- Network services 4

STUDENT SUPPORT

- SLiPI: Logistic Support and Information Point 5
- CAS: Assistance and Support Center 5
- Science and Technology Library 5
- Printing and reprographic service 5
- UAB Apps 5
- Information point of the UAB 5
- equality 6
- Health and emergencies  6
- PIUNE: Service for inclusion 6
- Tutoresport 6
- SAF: Physical Activity Service 6
- Employability Service 6
- Alumni 6
- Peer Power 6
- Student participation 6
- laboratories 7
- exchanges 7
- Student associations in Biosciences 7
- others 7
- Study grants 7
- UAB Opina 7
- UAB Open Labs 7

PROTOCOL IN CASE OF HARASSMENT 7

MEET THE FACULTY

ACCESSES AND MAPS



Faculty of Biosciences | UAB Building C
Carrer de la Vall Moronta, S/N
08193 Bellaterra, Barcelona

GO THERE

THE DEAN'S TEAM



ISIDRE GIBERT GONZÁLEZ
dean

✉ isidre.gibert@uab.cat



SONIA CASILLAS VILADERRAMS
Vice Dean of Students, Employability
and Communication and Faculty
Secretary

✉ sonia.casillas@uab.cat



AURORA RUIZ-HERRERA MORENO
Vice Dean of Programming, Mobility
and Promotion

✉ aurora.ruizherrera@uab.cat



CRISTINA MARIA PEREIRA DOS SANTOS
Vice Dean of Academic Affairs and
Quality

✉ cristina.santos@uab.cat



MARIA ROSARIO FERNANDEZ GALLEGOS
Vice Dean of Economy and
Infrastructure

✉ rosario.fernandez@uab.cat



ANNA BARRAGAN
Center administrator

✉ anna.barragan@uab.cat

CONTACT



@uabbciencias



@uabbciencias



Faculty website

THE DEPARTMENTS

They are the units in charge of organizing and developing the activity of the teaching and research staff. Each Department encompasses a field of knowledge and includes several more specific areas:

• Department of Animal Biology, Plant Biology and Ecology



+34 93 581 37 86



d.bave@uab.cat



<https://www.uab.cat/web/departament-de-biologia-animada-biologia-vegetal-i-ecologia-1248762685315.html>

• Department of Cell Biology, Physiology and Immunology



+34 93 581 18 39



d.bcfi@uab.cat



<https://www.uab.cat/departament/biologia-cellular-physiology-immunology/>

• Department of Biochemistry and Molecular Biology



+34 93 581 19 10



d.bioquimica@uab.cat



<https://www.uab.cat/ca/bioquimica>

• Department of Genetics and Microbiology



+34 93 581 27 24



d.genetica.microbiologia@uab.cat



<https://www.uab.cat/ca/genetica-microbiologia>

Choose your representatives:

**GOVERNMENT
BODIES**

DEGREE AND EXCHANGE STUDENT COORDINATION



ALICIA ROQUE
Biochemistry



ANNA SOLER
Environmental
Biology



MARC TORRENT
Biotechnology



DANIEL YERRO
Microbiology



MASSIMO BOGLIOLO
Genetics



ALBERT QUINTANA
Biomedical Sciences



SOLEDAD MARTOS
Biology



EXCHANGE STUDENTS



AURORA RUIZ-HERRERA MORENO
Exchange students



ACADEMIC MANAGEMENT

This service is responsible for processing academic and teaching support processes.

+34 93 581 37 12

REQUEST AN APPOINTMENT

- For general inquiries → ga.biociencias@uab.cat
- For exchange inquiries → intercanvis.biociencias@uab.cat
- For academic practices → ga.practiques.biociencias@uab.cat
- For Master's inquiries → ga.masters.biociencias@uab.cat



ACADEMIC INFORMATION

DEGREE WEBSITES

GO THERE

CALENDARS

ACADEMIC

SCHEDULES AND CLASSROOMS

SCHEDULE AND CLASSROOMS

TEACHING GUIDES

Organization, content and evaluation of subjects. Consult them on the website of your degree.

Student guide

GO THERE

End of Studies Project

GO THERE

Academic practices

GO THERE

Propedeutic courses

GO THERE



ECIU WEB

A LA UAB



eciuniversity.coordina@uab.cat

ONLINE SERVICES



The NIU is your user code to access the UAB network services. You will receive it when you register for the first time at the UAB. Generate your password in the "Services - Password Management" section.

Personal Space - Intranet → Portal that allows access to many UAB applications

→ **GO THERE**

Campus Virtual → Virtual Learning Environment to support face-to-face studies and facilitate non-face-to-face studies

→ **GO THERE**

Virtual Secretary → Auto-registration, scholarships, file consultation, pre-registration, etc

→ **GO THERE**

Mail and cloud services → Redirectable mail service to personal addresses and other cloud services.

→ **GO THERE**

Redirect it

Directorate of ICT students → ICT services portal for students

→ **GO THERE**

STUDENT SUPPORT

SLIPI: LOGISTICS SUPPORT AND INFORMATION POINT

It offers information on the location and timetables of the classrooms and other dependencies of the centre; reservation and/or space management; monitoring of building maintenance, breakdowns in facilities or equipment; medicine cabinet; lost items; lockers; consignment note; delivery of material; etc.

+34 93 581 10 55 / +34 93 581 28 12 / +34 93 581 27 71

slipi.ciencias@uab.es

+ INFORMATION

CAS: ASSISTANCE AND SUPPORT CENTER

The CAS attends to queries, requests and incidents that may arise, for example, in the use of DTIC services (institutional email; connection to the UAB network; Virtual Campus; access to corporate applications and services; etc.) .

IT Service Carrer de l'Albareda, Building D

+34 93 581 2100

cas@uab.cat

INCIDENTS AND PLANNING OF ACTIONS

Notices and news

+ INFORMATION

SCIENCE AND TECHNOLOGY LIBRARY

WHAT DOES IT OFFER?

- Consultation and loan of documents
- Access to electronic resources
- Study and work spaces
- Computer and audiovisual equipment
- Photocopiers, printers, scanners
- Training (copyright; Scopus; support for academic works; etc.)

INFORMATION SERVICES

+34 93 581 1801 +34 93 581 1517

619 681 146 (dill-div 10-19 h)

Information Service contact form

Copyright, intellectual property, copyright, open access, etc.

WEB SHORTCUTS:

El meu compte Access to the personal area of the Library Service

Cercador Search online in the library catalog

Biociències Electronic resources (databases; e-journals; etc.)

UAB Documents digital repository

+ INFORMATION

PRINTING AND REPROGRAPHIC SERVICE

As a UAB student, you have access to use any of the following printing, copying or scanning systems offered at the UAB, self-service or assisted service:



+ INFO

SELF-SERVICE Allows you to print documents from any device (computer, laptop, tablet, mobile, etc.) or from the computers in the IT classrooms or the libraries, and collect the work from any of the computers distributed on the Campus (in the Faculty , you will find them in the library, corridors and lobbies of the building).

ASSISTED SERVICE In the Civic Square.

+34 93 581 1660
ocivica@canon.es

+ INFO

UAB APPS

The UAB on your mobile: student card, management, libraries, grades, surveys, etc.

UAB

Access the active subjects on the UAB Virtual Campus.



INFORMATION POINT

Civic Square
informacio@uab.cat
+ 34 93 581 11 11

+ INFO

EQUALITY

Equality Manager: Marta Martín

✉ marta.martin@uab.cat

Equality

+ INFORMATION

**Commission
Harassment protocols**

+ INFORMATION

Observatory for Equality

+ INFORMATION

The Observatory for Equality is dedicated to the analysis of inequalities in higher education, specifically to the study and diagnosis of sexism and inequalities due to disability, from an intersectional perspective.

HEALTH AND EMERGENCIES

HEALTH CARE SERVICE:

☎ 93 581 18 00 / 93 581 13 11

📍 Avda Can Domènech - Building F

✉ servei.salut@uab.cat

+ INFORMATION

+ SAS PSYCHOLOGY
UNIT

+ PSYCHOLOGY
AND LOGOPAEDIA

MENTAL HEALTH:



+ RESOURCES

SECURITY AND SURVEILLANCE SERVICE:

☎ 93 581 25 25 ✉ seguret@uab.cat

+ PREVENTION OF
RISKS AND HEALTH

HOW TO ACT IN CASE
OF EMERGENCY



PIUNE: SERVICE FOR INCLUSION

PIUNE works to ensure that anyone, regardless of their disability and/or specific educational need, can access higher studies with equal opportunities and enjoy a full and autonomous academic and social life at the university.

📍 Civic Square - Room 2

☎ 93 581 47 16 / 649179815

✉ fas.piune@uab.cat

+ INFORMATION AND
REGISTRATIONS

TUTORESPOORT

Tutoresport-UAB is an academic support and tutoring program aimed at high performance athletes. Recognition of 6 credits and many other benefits.

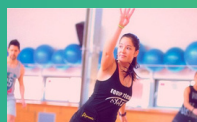
📍 Physical Activity Service

☎ 93 581 26 62 / 629 704 166

✉ tutoresport.uab@uab.cat

+ INFORMATION AND
REGISTRATIONS

SAF: PHYSICAL ACTIVITY SERVICE



+ INFO

EMPLOYABILITY SERVICE

Accompanies students and graduates in their professional development and extracurricular practices.

+ INFORMATION **nexus**

📄 Activity RAC Projecta't

ALUMNI

Welcomes the community of graduates. It offers networking, training and mentoring.

+ INFORMATION **in** **Bi** **Alumni** **UAB**

📄 Activity RAC Mentoria UAB

PEER POWER

The Peer Power program includes different forms of peer mentoring in the Faculty of Biosciences, where different groups of students act as mentors or mentees.

📄 Activity RAC Peer Power (up to 6 ECTS)

Mentored student:

STUDENTS 1st **EXCHANGE** **PIUNE** **TUTORESPOORT**

SINGLE EVALUATION **ACADEMIC MENTORING**

+ INFORMATION

STUDENT PARTICIPATION

COMMUNITY INVESTIGATION: Encourages student participation, promotes the growth and consolidation of the associative fabric, supports student representation.

📍 Civic Square - Agora

☎ 93 581 43 83

✉ info.participacio@uab.cat

**FAS, AUTONOMOUS SOLIDARITY
FOUNDATION**

SOCIAL RESPONSIBILITY U.

LIVE CULTURE

+ INFORMATION

THE COMMUNITY

+ INFO

+ INFO

+ INFO

PATRONAGE

+ INFO

LABORATORIES



Guide for obtaining the Safety Certificate in the teaching laboratories and on trips outside the campus.

Operation of the laboratories

MATERIAL BANK: Loan of material for practices. More info in the CV (Faculty of Biosciences classroom).

+ INFO

+ INFO

REQUEST

EXCHANGE



Study exchange at a foreign university:

- Other Spanish universities **SICUE**
- Europe **ERASMUS +** **ERASMUS PRACTICES**
- rest of the world **UAB EXCHANGE PROGRAM** **UAB EXCHANGE PRACTICE PROGRAM**

Academic Management Biosciences

93 581 37 07

intercanvis.biociencias@uab.cat

+ INFO

STUDENT ASSOCIATIONS

Council of Biosciences students



BIOFARRA

S. SOLIDARITY

+ INFO

Assembly of Sciences and Biosciences



WEEK CRITICAL SCIENCE

+ INFO

OTHERS

EMPLOYABILITY: Employability and career guidance activities. More info in the CV.



Activity RAC Projecta't

EVENTS: Course opening / Sant Albert / Nobel Prizes / ...



Activitat RAC Participa

EQUALITY: Toilets for all genders / Menstrual cup washing / Lactation room.



SUSTAINABILITY: Sustainability Commission.



RESTAURANT: Cafeteria and lunchroom.



SCHOLARSHIPS FOR STUDY

SCHOLARSHIPS AND AID

OPINA UAB

Suggestions, complaints and compliments

+ INFO

ACCESS

UAB OPEN LABS

+ INFO



A la UAB T'ACOMPANYEM
A la Facultat de Biociències
ACTUEM
davant les violències masclistes

A la UAB comptes amb el suport de persones expertes en gènere. Et podem ajudar si et trobes en una situació de risc per assetjament, conductes sexuals inapropiades i discriminacions o bé has presenciat alguna d'aquestes situacions. Pots contactar amb la persona responsable de polítiques d'igualtat de la Facultat de Biociències, o amb l'Observatori per a la Igualtat perquè t'informi dels instruments que tens al teu abast.

1 Demana ajuda, t'escoltarem i acompanyarem

Responsable de polítiques d'igualtat de la Facultat de Biociències
responsable.igualtat.biociencias@uab.cat
93 581 33 12



Pàgina web Observatori

Observatori per a la Igualtat de la UAB
atencio.observatori.igualtat@uab.cat
93 581 48 52

2 Rep suport a través de l'acollida psicològica especialitzada

Unitat de Psicogènere
psicologia.perspectiva.genero@uab.cat
93 581 29 01

3 Activa el protocol



Protocol

Presenta una sol·licitud per iniciar el procediment per activar el Protocol per prevenir i actuar contra

- L'assetjament sexual
- L'assetjament per raó de sexe, orientació sexual, identitat de gènere o expressió de gènere
- La violència masclista

Vine i explica-ho!