



UAB
Universitat Autònoma
de Barcelona



AQU Catalunya està inscrita en EQAR



MASTER IN BIOLOGICAL ANTHROPOLOGY

Cristina Santos

cristina.santos@uab.cat

Araceli Rosa

araceli.rosa@ub.edu

MASTER IN BIOLOGICAL ANTHROPOLOGY

Main Goal: The Master offers to **graduates in Biosciences and Humanities** an up-to-date education on human biodiversity, its origin, evolution and biomedical implications.

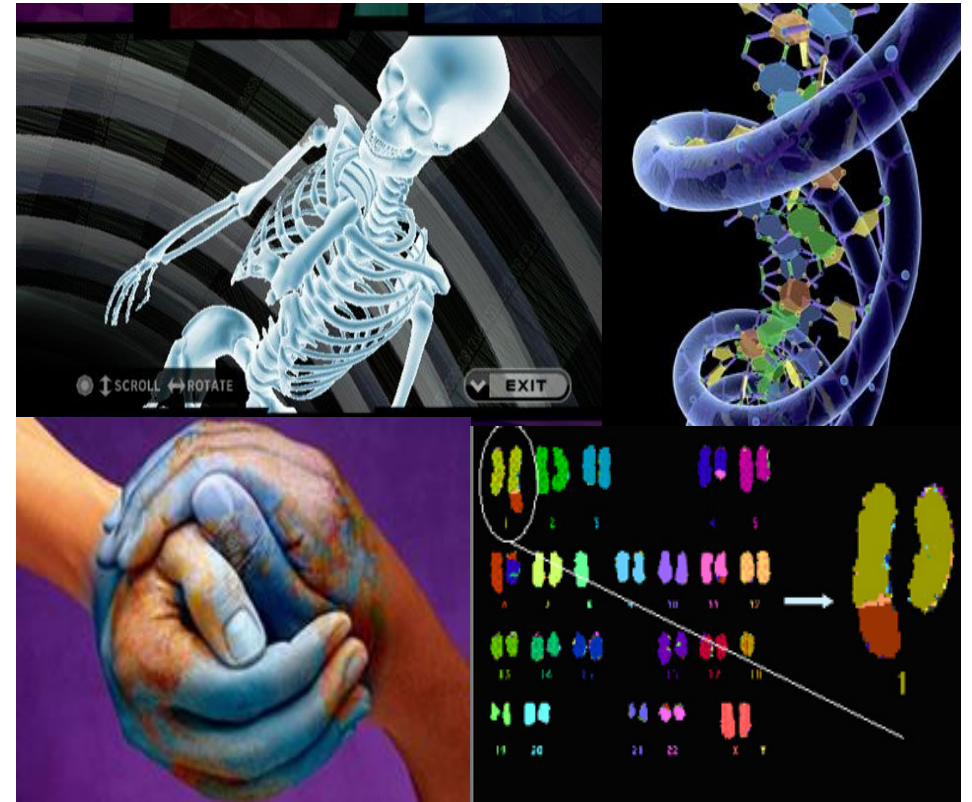
Approach: **research** focus; but there is a very close collaboration with companies in the field.



MASTER IN BIOLOGICAL ANTHROPOLOGY SPECIALITIES

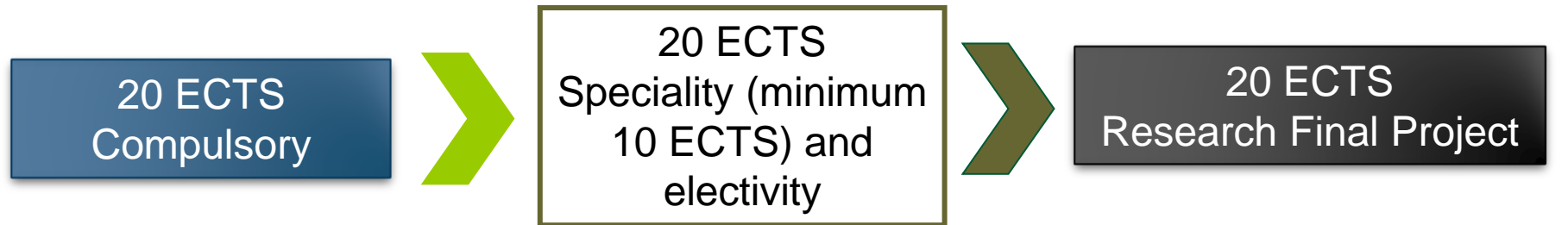
Forensic and Physical Anthropology

Human Diversity and Biomedical Applications



MASTER IN BIOLOGICAL ANTHROPOLOGY: SYLLABUS

60 ECTS

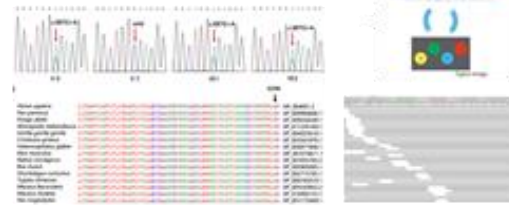


1 academic year

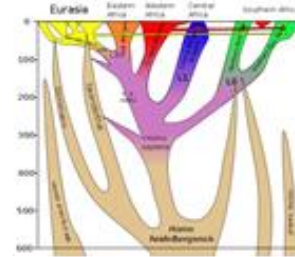
Up to three years (minimum 20 ECTS/year)

COMPULSORY contents(20 ECTS): Principles in Biological Anthropology

Human Biodiversity I and II



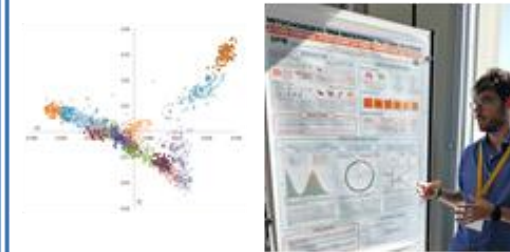
Primateology and Human Evolution



Osteology and Forensic Anthropology



Statistical Analysis and Results Presentation I and II



Human Biology Lab I and II



**MASTER IN BIOLOGICAL ANTHROPOLOGY:
SYLLABUS - COMPULSORY**

Speciality 1

2.5 ECTS subjects

Forensic and Physical Anthropology

- Primatology
- Advances in Human Evolution
- Identification Methods
- Taphonomy and Fieldwork in Anthropology
- Geometric Morphometry: Analysis of Morphological Diversity
- Demographic Anthropology and Reconstruction of Ancient Populations

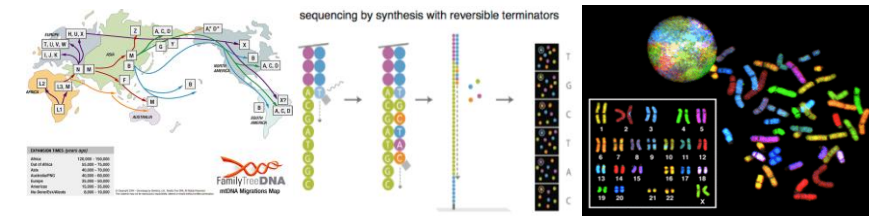


Speciality 2

2.5 ECTS subjects

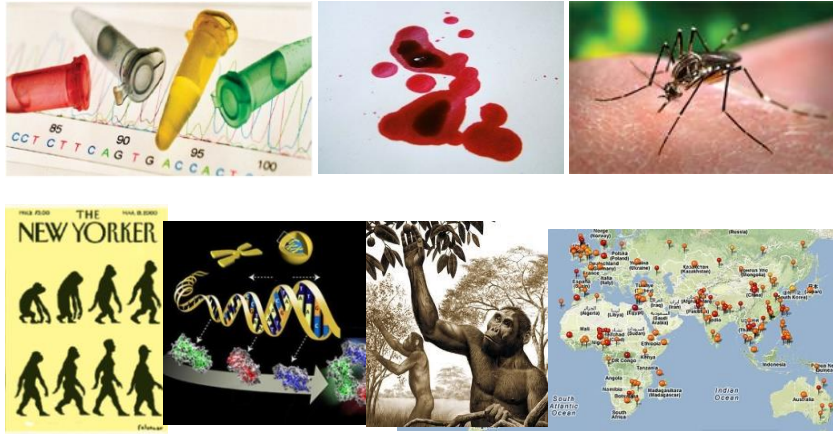
Human Diversity and Biomedical Applications

- Genes, Genomes and Populations
- From Genome to the complex Phenotypes
- Genomic Models for Prediction in Epidemiology
- Advanced Molecular Methods
- Molecular Evolution
- Cancer Genetics



MASTER IN BIOLOGICAL ANTHROPOLOGY: SYLLABUS - SPECIALITY

ELECTIVITY
2.5 ECTS subjects
Perspectives in Human Biology



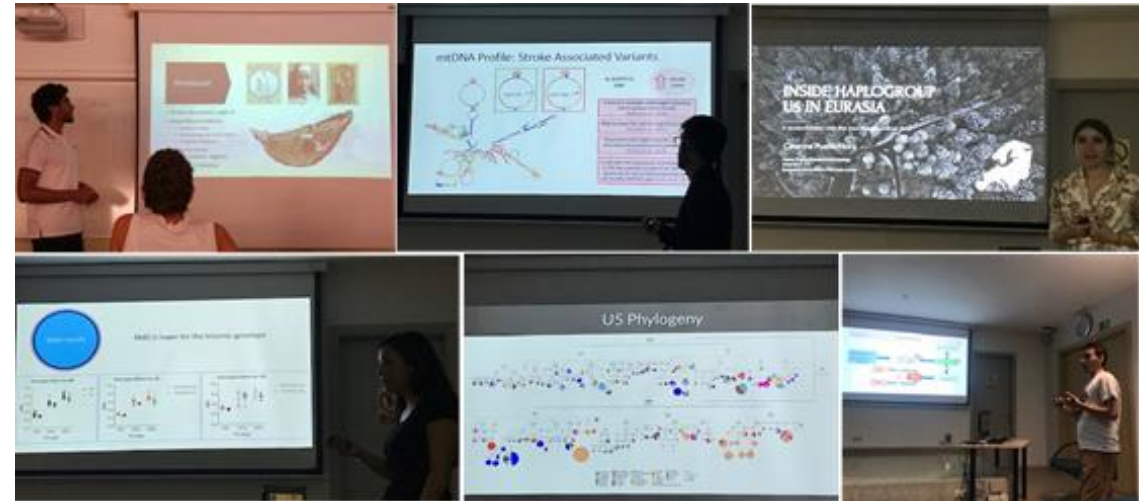
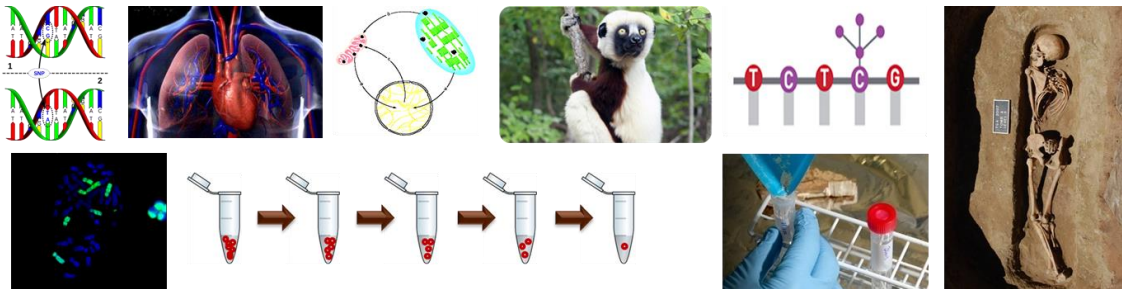
- Forensic Genetics
- Nutritional Anthropology
- Environment, Populations and Emerging diseases
- Genetic and Environmental Factors Affecting Human Diseases

MASTER IN BIOLOGICAL ANTHROPOLOGY:
SYLLABUS - SPECIALITY

RESEARCH FINAL PROJECT

20 ECTS

- Design and execution of a research project
- Experimental work from 6 to 9 months



MASTER IN BIOLOGICAL ANTHROPOLOGY: SYLLABUS - RESEARCH FINAL PROJECT

UAB

**Universitat Autònoma
de Barcelona**



**Universitat
de Barcelona**



Generalitat de Catalunya
Departament de Justícia
**Institut de Medicina Legal
de Catalunya**



**Vall d'Hebron
Hospital**



ICP

Institut Català de Paleontologia
Miquel Crusafont

UNIVERSITAT



POMPEU FABRA



Instituto Nacional de Toxicología y
Ciencias Forenses



Antropòlegs Lab

Professors Research Group

2017SGR1630	<u>Grup de Recerca en Antropologia Biològica (GREAB)</u>
2017SGR960	Paleoecology and Evolutionary Biology Acronym – PEB
2017SGR255	Estudis Citogenètics i Moleculars dels efectes de les radiacions ionitzants i del càncer
2017SGR1215	Genome Integrity Group
2017SGR1588	Marine and environmental biogeosciences research group (MERS)
2017SGR1796	Grup de Recerca de Citogenètica Bàsica i Clínica
2017SGR1577	<u>Gens, ambient i desenvolupament: una visió longitudinal en la comprensió de l'origen de la malaltia mental i la diversitat del comportament humà</u>
2017SGR974	<u>Brainlab-Grup de Recerca en Neurociència Cognitiva</u>
2017SGR102	<u>Grup d'Estudi de la Biologia Evolutiva dels Homínids i altres Primats</u>
2017SGR86	Paleoprimatologia i paleontologia humana (PIPH)
2017SGR00116	Neogene and Quaternary Vertebrate Paleobiodiversity (NQVP)

Inici > Studies > University master's degrees > Biological Anthropology

< Back

Biological Anthropology

About the master's degree

- Introduction
- Objectives and competences
- Admission and pre-enrolment
- Course curriculum
- Placements
- Teaching methodology and assessment system
- Career opportunities
- Support for studying
- Enrolment
- Calendar, timetables, classrooms and assessment
- Course plans and teaching staff

Introduction



Pre-enrolment

The master's degree Biological Anthropology is intended to provide holders of degrees in experimental sciences and the humanities with up-to-date training in human biodiversity, its origin, evolution and the biomedical implications. The program responds to the growing demand for specialists in the area of human biology and physical anthropology, contributing knowledge and methodologies pertaining to this area of specialization and related areas (e.g., physiology, genetics, zoology, medicine, archaeology).



@AntroBiologica



Biological Anthropology - Faculty x +

ub.edu/portal/web/biology/university-master-s-degrees/-/ensenyament/detallEnsenyament/7322805/2

Aplicaciones Gmail YouTube Maps

UNIVERSITAT DE BARCELONA

The Faculty Studies Research and

Inici > Studies > University master's degrees > Biological Anthropology

< Back


Biological Anthropology

About the master's degree

- Introduction
- Objectives and competences
- Admission and pre-enrolment**
 - Recommended applicant profile and admission requirements
 - Pre-enrolment
 - Admission list

Admission and pre-enrolment

- Recommended applicant profile and admission requirements
- Pre-enrolment**
- Admission list

Share:  Facebook

Pre-enrolment

Pre-enrolment calendar

- First period: 1 February - 10 June 2022.
- Second period: 11 June - 4 September 2022.

Open Pre-enrolment

[PRE-ENROLMENT FORM](#)

Notes:

- **Pre-enrolment fee:** A pre-enrolment fee of 30,21 euros is charged. Students who apply to more than one master's degree must pay the fee for each pre-enrolment request. Pre-enrolment requests cannot be processed until this fee has been paid. Fees will only be refunded if the master's degree in question is suspended.
- **Reserved places:** A maximum of 5% of the new places of the master's degree are reserved for students who meet the general and specific access requirements and accredit the recognition of a degree of disability equal to or greater than 33%.

<https://www.ub.edu/portal/web/biology/university-master-s-degrees/-/ensenyament/detallEnsenyament/7322805/4>



UAB
Universitat Autònoma
de Barcelona



MASTER IN BIOLOGICAL ANTHROPOLOGY

Cristina Santos
cristina.santos@uab.cat

Araceli Rosa
araceli.rosa@ub.edu