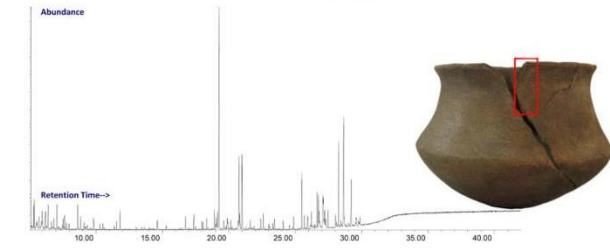
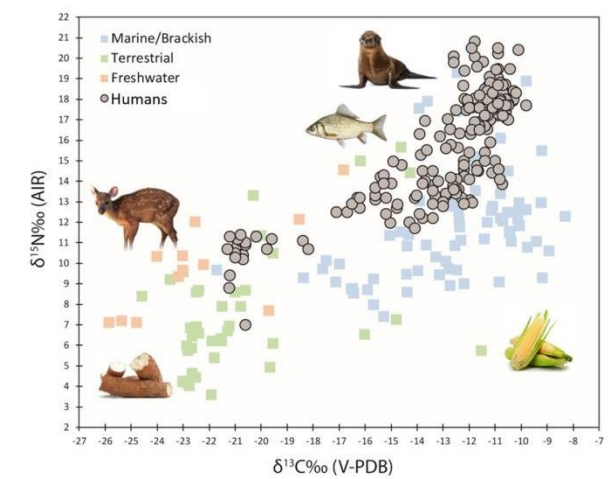


Presentation

The **Official Master's Degree in Prehistoric Archaeology** provides advanced training in specialized analytical theories and methods, applied to the study of past societies.

Providing training in the design and development of **independent and interdisciplinary research projects**. The training is also applicable to **education and cultural sectors, and the management and dissemination of archaeology**.

It is aimed mainly at those with previous degrees in Archaeology, History, Art History, Anthropology, Biology, and Geology.



Official Master Prehistoric Archaeology

Year 2023-2024

UAB Universitat Autònoma
de Barcelona

Faculty of Arts and Humanities
Universitat Autònoma de
Barcelona - Campus UAB
08193 Bellaterra (Barcelona)
Tel. +34 93 581 4333

Coordination:
Rafael Micó Pérez
Rafael.Mico@uab.cat



[Master Website](#)

UAB
Universitat Autònoma
de Barcelona

www.uab.cat

Official master's degree in Prehistoric Archaeology

The syllabus includes **four compulsory modules**. Two modules focus on the **latest theoretical and methodological trends**, especially those involving digital resources. The third includes **external practice** in a laboratory or entity dedicated to research and dissemination, to introduce the students to a dynamic work environment. The fourth, a **master's thesis**, allows the development of an original research project suited to personal interests.

The teaching programme is completed with **5 additional modules selected from 7 options**. Students will be introduced to **instrumentation and practical** content, specializing in the **advanced analysis** of a wide range of organic and inorganic materials and objects.

Modules are taught by are highly qualified staff with excellent, cutting-edge research experience.

UAB Archaeology Campus

The network of archaeological sites 'UAB Archaeology Campus' allows master's degree students to access unique equipment and resources for their training. The 12 archaeological sites included in the network cover the whole timespan of Prehistory, Antiquity and the Middle Ages. Ongoing research projects offer an excellent background for internships and master's degree projects.

[Archaeology Campus website](#)

Study plan structure

Compulsory modules	Semester	Credits
➤ Social archeology: theories, methods and discourses	1	6
➤ Archeology, space and time: social theory and computational methods	1	6
➤ External internships	2	6
➤ Master's Thesis	2	12

Optional modules	Semester	Credits
➤ Archaeobotany: social management of plant resources	1	6
➤ Archaeozoology: social management of faunal resources	1	6
➤ Human osteoarcheology: anthropological analysis of social groups	1	6
➤ Introduction to Biomolecular Archaeology	2	6
➤ Pottery artifacts: production and use	2	6
➤ Lithic artifacts: production and use	2	6
➤ Archaeometallurgy: production and use	2	6

General information

Modality: Attended

Credits: 60 ECTS

Places: 25

Price: 27.67 € per ECTS credit (academic year 2023-2024. EU citizens and non-EU holding a Spanish residence permit)

66€ per ECTS credit (provisional price. Academic year 2023-2024.

Non-EU citizens who do not hold a Spanish residence permit)

Course begins on: October 2023

Teaching centre: Faculty of Arts and Humanities - Campus UAB

Language: Catalan, Spanish and English

Career opportunities: Research, Consultant, archaeological project management, educational and cultural diffusion fields, museums, cultural foundations, etc.